

## QUALITY COMMERCIAL R.O.



The TSM system design is optimized for either shelf mount or wall mount installation. This allows flexibility in accommodating the limited space available in most commercial utility equipment locations. Quick connect tube fittings on all system ports further simplifies installation and service. Most important, the TSM 1500 incorporates the most reliable combination of proven reverse osmosis hydraulic design and state of the art Thin Film membrane elements to provide the long term performance expected by commercial users.

## FEATURES

All Tomar TSM Reverse Osmosis systems include the following important quality features.

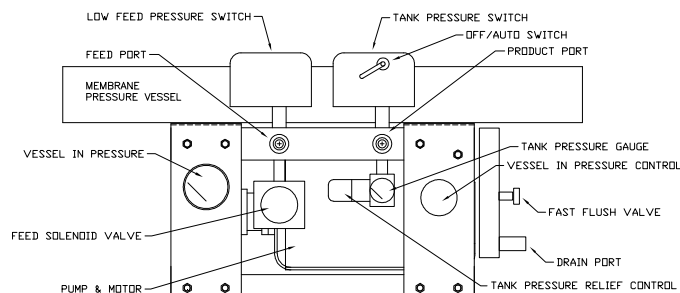
- **Stainless Steel Frame & Pressure Vessels**
- **Thin Film Composite Membranes**
- **GE High Performance 3/4 HP Motors**
- **Positive Displacement Rotary Vane Pump**
- **Integral Hydraulic Manifold Assembly**
- **Fast Flush Control**
- **Low Feed Pressure Cutout Switch**
- **Tank Pressure Control Switch**
- **Delrin Orifice or Teflon Tube Flow Control**
- **Feed Inlet Solenoid Valve**
- **SS Needle Valve Pressure Control**
- **Product Tank Pressure Relief Valve**
- **All Systems Factory Wet Tested**
- **Delrin/Acetal Plumbing Manifold**
- **Pressure Regulator Tank Protection**

### SPECIFICATIONS

	TSM-1500
Frame	Stainless Steel, No. 4 Finish
Membranes	1 ea. 4040 Thin Film Composite
Vessels	4040 SS End Clamp
Pump	Brass Positive Displacement (SS option)
Gauges	Pressure Vessel Inlet, SS case, bronze internals, glycerine filled and Tank Pressure
Valves	Pressure Vessel Control Valve, Membrane Flush Valve, Feed Water Solenoid Valve, Product Water Check Valve, & Tank Pressure Relief Valve
Switches	Low Feed Pressure Cutout & Tank Pressure Cutout with Auto/Off Lever
Electrical	110/220V 60Hz 1-phase, Max. Current 10.4A @120V, 5.2A @220V
Motor	GE 3/4 HP, 1725 RPM, Drip Proof, Thermally Protected
Connections Feed/Drain/Product	1/2" Quick Connect Fittings
Capacity*	1.04 GPM, 1500 GPD (5.7 m <sup>3</sup> /day)
Nominal/Max. Operating Pressure	150/200 psi (10.3/13.8 bar)
Recovery	33 to 50%
Typical Rejection	98%
Max Feed TDS	2500 ppm
Max. Feed Temp.	113F/45C
Feed pH Range	2-11
Max. Chlorine**	<0.1 ppm
Footprint	14"W x 8"D (35.6 x 20.3 cm)
Overall Dimensions	45"W x 8"D x 14"H (114.3 x 20.3 x 35.6 cm)
Weight (Dry)	62 lbs. (28.2 kg)

\* Product flow rates based on flow to atmosphere. When using a bladder pressure tank, product flow rate will reduce as tank back pressure increases.

\*\* Feed water containing chlorine must be dechlorinated by carbon pre-filtration or other means.



### OPTIONS

Product Storage Tanks • Atmospheric Tank Level Controls • Repressurization system • Automatic Flush • Pre/Post Filters and Treatment • Wall Mounting Brackets • Stainless Steel Pumps • UV Treatment

